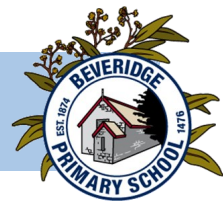


Beveridge Primary School Newsletter



KEY DATES

AUGUST

31st August
Fathers Day Stall
@ Ambrosia

SEPTEMBER

1st September
Fathers Day Stall
@ Arrowsmith

5th September
Division Athletics

7th September
Da Vinci's Apprentice
Performing arts incursion—
whole school

11th—13th September
Grade 6 Alexandra Camp

11th—13th September
Grade 3-5
Life Education

15th September
Last day of term 3—early
finish 2:15pm/2:30pm



Week — 25th August , 2023

PRINCIPAL REPORT

Dear Families,

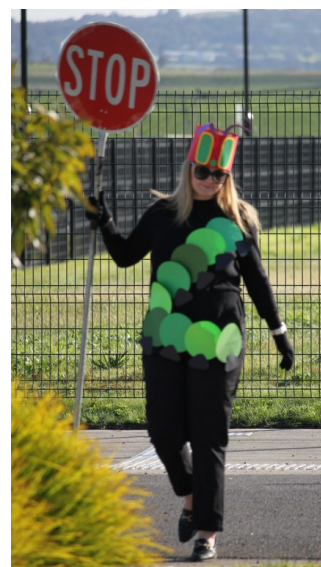
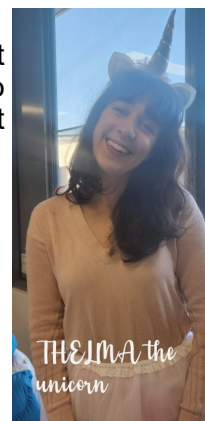
Our **Book Week** celebrations have definitely been the highlight of the week. We had a fabulous day at the Ambrosia campus yesterday undertaking activities and we all thoroughly enjoyed the sea of costumes on parade. Thank you to families for attending yesterday and for all your hard work in preparing costumes. And, we all loved having a lunch order. Please enjoy looking through some photos taken.

District Athletics Fri 25th

Well done to all students who participated in our district athletics today at Meadowglen. We were all very proud to hear that 28 students have made it through to the next round of the competition. Congratulations!

And lastly, don't forget our **Father's Day Stalls** are coming up later next week and I hope you have all got your tickets for the **Father's Day raffle!**

Yours sincerely,
Christine Cole



2023 District Athletic Team



Our Beveridge Primary School Values: Excellence – Respect – Togetherness – Resilience

Beveridge Primary School aims to be a safe welcoming and engaging community. We value inquiring minds and encourage the best in all.

EXCITING NEWS...

Crumbs & co. Lunch Orders are coming to Beveridge PS!



Hello Beveridge PS families!

Crumbs & co. are excited to launch their lunch order service starting next Thursday, August 31st!

For the remainder of this term the lunch order service will be every Thursday, with ordering available up until midnight the night prior.

The lovely ladies from crumbs & co. will be providing us with any news, changes, specials etc to communicate with families via Compass and posted on our school facebook page.

A few "how to's" regarding the use of the Flexischools app can be found within the Compass notification and on our FB page.

Each week they offer a weekly meal special which is a hot dish, such as spag bol, honey chicken, gnocchi, burgers and baked potatoes. Perfect for these cold months!

Weekly specials will be announced on a Monday so stay tuned!

Should you have any questions in the meantime please don't hesitate to reach out to crumbs & co. via messaging their Facebook page or giving them a call on their direct number 0491 640 487.

HOW TO PLACE AN ORDER

WITH  flexischools



- 1 Click "[Order food](#)" at the top of the home page on your app.
- 2 Select the child you want to order for, then the date you wish to receive your order on.
- 3 Choose the food items you wish to purchase, then select "[Confirm Order](#)".
- 4 Choose your desired payment option.
- 5 Press "[Place Order](#)" to confirm your purchase.

ENJOY!



Download Flexischools app



crumbs
& co.

Register for
Flexischools by
Sunday 3rd Sept
and get \$5 added
to your account!



With Flexischools, you can quickly place school orders online through the Flexischools app which has a 4.8-star App Store rating! Online Lunch orders available every Thursday.

Every family that registers for Flexischools by midnight on Sunday 3rd September will receive \$5 from Flexischools!

This will be deposited into your account on Monday 4th September



Download the app &
register for Flexischools

 flexischools

BOOK WEEK CELEBRATIONS AT ARROWSMITH

We enjoyed Book Week celebrations at our Ambrosia campus today.

Students and teachers all got into the spirit of book week with the theme

READ INSPIRE GROW



Our Beveridge Primary School Values: Excellence – Respect – Togetherness – Resilience

Beveridge Primary School aims to be a safe welcoming and engaging community. We value inquiring minds and encourage the best in all.



STUDENT OF THE WEEK

Foundation A	Meera M	Foundation B	Saanvi C
Foundation C	Shine S	Foundation D	Arrianna C
1A	Jujhar S		
1B	Nyla A		
1C	Leo H		
1D	Jasmine K		
2A	Taylor Y		
2B	Logan K		
2C	Easton J		
2D	Prithvi S		
3A	Uday T		
3B	Milla F		
3C	Freddy P		
4/5A	Judah L		
4/5B	Gypsy Jade H		
4/5C	Emir S		
4/5D	Savannah B		
4/5E	Ishant S		
6A	Gabrielle T		
6B	Limar E		

Our Beveridge Primary School Values: Excellence – Respect – Togetherness – Resilience

Beveridge Primary School aims to be a safe welcoming and engaging community. We value inquiring minds and encourage the best in all.



Department
of Education

2023 Parent / Caregiver / Guardian Opinion Survey:

WE WANT OUR PARENTS / CAREGIVERS / GUARDIANS TO TELL US WHAT THEY THINK!

Our school is conducting a survey to find out what parents / caregivers / guardians think of our school. The Parent / Caregiver / Guardian Opinion Survey is an annual survey offered by the Department of Education that is designed to assist schools in gaining an understanding of families' perceptions of school climate, student behavior, and student engagement. The survey is optional, but we encourage all families to participate. Our school will use the survey results to help inform and direct future school planning and improvement strategies. All families are invited to participate in the survey.

The Parent / Caregiver / Guardian Opinion Survey will be open from **Friday 18 August to Friday 8 September 2023**.

The survey will be conducted **online**, only takes **20 minutes** to complete, and can be accessed at any convenient time within the survey period on desktop computers, laptops, tablets, or smartphones. The online survey will be available in English and 10 other languages including Arabic, Greek, Hakha Chin, Hindi, Japanese, Punjabi, Simplified Chinese, Somali, Turkish, and Vietnamese.

To complete this survey, please refer to the communication that went out on Compass on Friday 18 August or contact the office.



Our Beveridge Primary School Values: Excellence – Respect – Togetherness – Resilience
Beveridge Primary School aims to be a safe welcoming and engaging community. We value inquiring minds and encourage the best in all.



SPECIALIST STUDENT OF THE WEEK

Arrowsmith

Visual Art	Riley H 2C
Performing Arts	Violet G 2B
PE	Amelia S 2B
Auslan	Owen K 2C

Ambrosia

Visual Arts	Caleb S 6A
Performing Arts	Maddison S 3A
PE	Jaxon G 45D
STEM	Eliza K 45C



We were privileged to have The 'Big Sister Experience' back at Beveridge this week. This was a second follow up workshop (after having already completing workshop 1 in July) with the year 6 girls that focused on female empowerment. Students really enjoyed the experience and there were many valuable takeaways from the day.

Topics covered in Workshop 2 were: Consent, Personal Boundaries, Female Health, Respectful Relationships.

Staff also took part in some Professional Development run by Kritz at 'The Big Sister Experience' on Nurturing Resilient Independent Young People. There were plenty of fantastic strategies and take-aways that teachers are very excited to implement with their students.



Investigations have been underway in the year 6 learning space this week with students having the opportunity to experiment with electrical circuits. Thank you to Aitken College for the lend of the Electrical Circuit Kits which have enabled our year 6s (who have been reading about conductors / insulators) to experiment with mini models and effectively connect prior learning into real life application.



MATHS LEARNING IN GRADE 6

Year 6s have been learning about the transformation of shapes.

Students have investigated rotating compound shapes, lines of symmetry and rotational symmetry in patterns.





TUNING IN TO KIDS

A FREE six session program for parents of 2-10 year olds

Would you like to learn how to

- be better at talking with your child?
- be better at understanding your child?
- help your child learn to manage their emotions?
- help to prevent behaviour problems in your child?
- teach your child to deal with conflict?

Fridays 9:15am - 11:15am
starting 28 July to 1 September 2023
Kilmore Primary School, Kilmore



Register online

or call Central Intake
1800 161 306



This workshop is for parents and/or carers in the Goulburn Region (Greater Shepparton, Mairi, Strathbogie, Mitchell and Murrindindi)



INDIAN COMMUNITY PLAYGROUP AT BEVERIDGE

LOCATION: GREATER BEVERIDGE COMMUNITY CENTRE, LITHGOW STREET BEVERIDGE (MANDALAY)

DAY: EVERY TUESDAY OF SCHOOL WEEKS

TIME: 9.30 AM TO 11.30 AM

COST: FREE

INDIAN COMMUNITY MEMBERS RESIDING IN MITCHELL SHIRE WITH CHILDREN AGED 0 - 4 ARE INVITED TO JOIN THE PLAYGROUP.

NOTE: FACE-TO-FACE AND ONLINE SESSIONS ARE PROVIDED DEPENDING ON RESTRICTIONS RELATED TO COVID -19 PANDEMIC.



CALL US: (03) 9216 3400

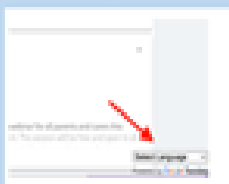
Web: www.beveridgeps.vic.edu.au

Email: dwarakaplaygroup@beveridgeprimaryschool.vic.gov.au



Google Translate is now available on Compass.

To turn it on head to the home page on a desktop and select the required language (bottom right hand corner).

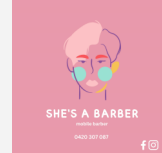
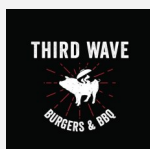
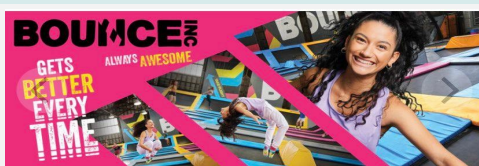


To use Google Translate on your phone, please open the APP in browser and select the required language (very small writing in the bottom righthand corner)



A huge thank you to the business' that have donated to our Father's Day Raffle!

Donations for our hampers are still being accepted at either campus. P&F appreciate your support and donations.



Our Beveridge Primary School Values: Excellence – Respect – Togetherness – Resilience
Beveridge Primary School aims to be a safe welcoming and engaging community. We value inquiring minds and encourage the best in all.

Certificate III in**School Based Education Support** CHC30221

Embark on a flexible and rewarding career where you can make a meaningful impact on the lives of children with additional needs.

www.prace.vic.edu.au**Certificate III in School Based Education Support** CHC30221

Education Support is a flexible and rewarding career where you can work in the classroom to support students with additional needs.

Prace delivers an industry driven and dynamic learning experience to ensure you are job-ready with the skills employers are looking for. With the guidance of expert teachers in a friendly and supportive classroom, you will develop the skills to:

- Support students with additional needs
- Support literacy and numeracy skills
- Contribute to planned educational programs
- Support the health, wellbeing and safety of students

You will participate in excursions, workshops and gain insights from industry guest speakers.

Pathways

Graduates are in demand and work in a range of educational settings, including primary and secondary schools and schools for children with additional needs. Graduates work as education assistants, teacher's aides and support workers.

Entry requirements

Aged 18 years and over. Moderate computer, email and internet skills. Plus digital technology access. English LLN skills at an industry entry standard.

How to enrol

Call 9462 6077 to arrange a pre-enrolment interview.



Prace Main Office
Merrills Community Centre - 35 Sturdee Street, Reservoir
Phone 9462 6077 | office@prace.vic.edu.au | www.prace.vic.edu.au

Employability skills**Barista & Cafe Operations**

Gain the employability skills required for an exciting and in-demand career.

www.prace.vic.edu.au**Employability skills****Barista & Cafe Operations**

Gain the essential employability skills required to be successful in the hospitality industry.

No experience necessary as you will gain the skills that will prepare you to hit the ground running to fill the labour shortage currently advertised in the hospitality industry. This 3 week program includes:

- Hands on training in a cafe environment
- Connect with industry representatives and employment opportunities
- Workplace communication and conflict resolution
- Resume and interview preparation
- Industry specific OHS requirements

Pathways

Employment in the hospitality industry, education pathways.

Workforce Australia

This course counts towards Workforce Australia mutual obligation requirements.

Prace encourages individuals with disabilities to participate in our programs and activities. This training is delivered with Victorian and Commonwealth Government funding. Prace TOID 4036



Supported by the City of Whittlesea
WIN Project - Local jobs for local people

Location

Wallan Neighbourhood House
42 Bentinck St, Wallan

Dates and duration

29 August - 13 Sept 2023
6 Sessions plus
2 x 5 hour industry placements

Days and hours

Tuesdays & Wednesdays
9.30am to 2.30pm

Entry requirements

Enthusiastic and motivated individuals interested in hospitality work

Fees

Course fee \$43
Plus \$10 Services fee

Enrolment

Call 9462 6077 or visit us at Merrills Community Centre. Or, call Wallan Neighbourhood House on 5783 1450



This course is endorsed by Learn Local.



Prace Main Office
Merrills Community Centre - 35 Sturdee Street, Reservoir
Phone 9462 6077 | office@prace.vic.edu.au | www.prace.vic.edu.au

Our Beveridge Primary School Values: Excellence - Respect - Togetherness - Resilience

Beveridge Primary School aims to be a safe welcoming and engaging community. We value inquiring minds and encourage the best in all.



ENROLMENTS & UPCOMING SCHOOL TOURS

2024 enrolments are now open. Please contact the office at either campus for all enrolment enquires. Foundation enrolments will close on Friday 28th July.

School tour dates will be operating at Arrowsmith on the following days:

- Tuesday December 12th – 4pm @ **Ambrosia**

To book in to attend one of these sessions, please email beveridge.ps@education.vic.gov.au

Foundation Transition days will run in term 4. Further details will be provided once your enrolment has been confirmed.



SECONDHAND SALE @ AMBROSIA

Shorts, skirts & tracksuit pants \$2.00

Jumpers, dresses, t-shirts \$5.00

EFTPOS is available.

If you have any good condition second hand uniforms to donate we would really appreciate it.

Casual Relief Teachers Wanted!

@ BEVERIDGE PRIMARY SCHOOL

- Flexible working days
- Range of Year levels (P-6) and Specialist programs
- Collaborative teaching teams
- Wonderful teaching and learning environment
- Welcoming and friendly staff
- Must have current VIT Registration

APPLY NOW!



Send your Resume to:

beveridge.ps@education.vic.gov.au

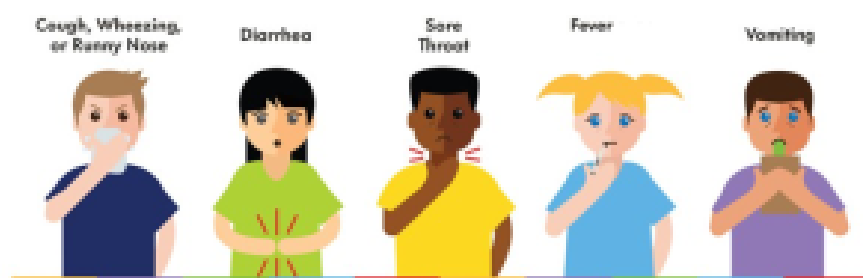
Or contact the school on 03 9216 3400

Our Beveridge Primary School Values: Excellence – Respect – Togetherness – Resilience

Beveridge Primary School aims to be a safe welcoming and engaging community. We value inquiring minds and encourage the best in all.

SHOULD MY CHILD STAY HOME FROM SCHOOL?

5 SYMPTOMS TO GIVE YOU CLUES



A NOTE FROM THE SICKBAY:

Please do not send your child to school if they are sick or feeling unwell.

Our Sickbay facilities are to allow provision of basic first aid care only.

The sickbay is not for long term use and in most cases, parents are contacted to collect their children and take them home when their child is unwell.

First Aid F.A.Q.

Last night my child was vomiting/has diarrhoea. (Gastroenteritis or gastro like symptoms.) Can I send them to school?

Keep your child away from other children as much as possible until the vomiting or diarrhoea has stopped. Make sure they are consuming adequate fluids. Your child should be excluded from school until the vomiting or diarrhoea has stopped. (usually 48 hrs)

Last night my child was vomiting. Can I send them to school?

Keep your child at home until at least 24 hours from the last time they vomited. (1 day) We do not have a nurse on duty in sick bay and you will be called to collect your child if they are unwell.

Covid-19 or Flu like symptoms

The symptoms to watch out for are:

- loss or change in sense of smell or taste
- fever (temperature)
- chills or sweats
- cough
- sore throat
- shortness of breath
- runny nose

Please do not send your child to school if they are experiencing any of these symptoms.

Get tested and stay at home if you or your child feels unwell.

For more information please check out the Department of Education (Victoria) web page